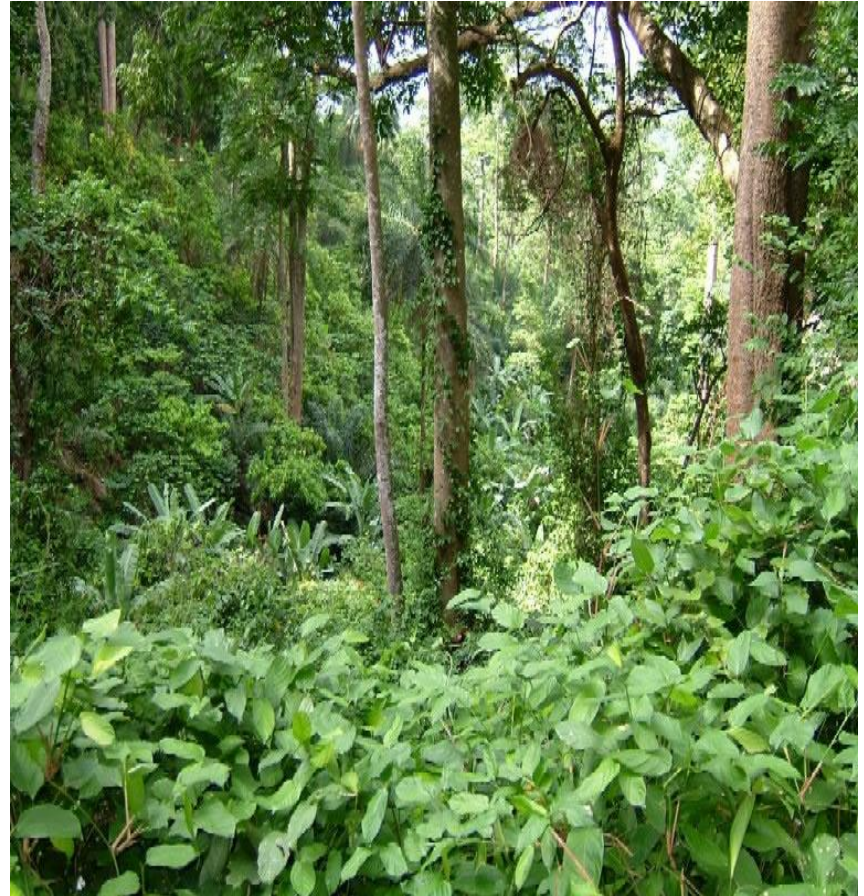


FCPF – External Technical Advisory Panel

TAP Summary Report: Togo

TAP team: Stephen Cobb and 6 other
reviewers

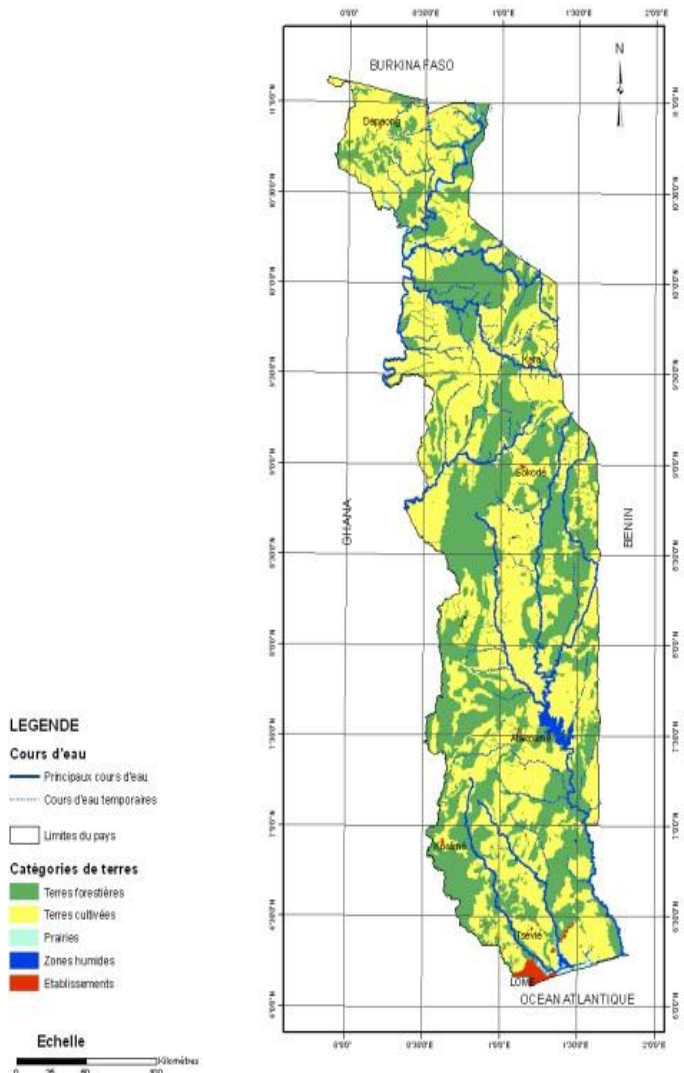


16th FCPF Participants Committee Meeting
Geneva, Switzerland
December 2013

**FOREST
CARBON
PARTNERSHIP
FACILITY**

Togo – country context

- Population
 - 6.1 million (2010)
 - 2.84 % p.a. growth rate
- Rural population
 - 62% (RPP)
- Forest cover (2010)
 - 5% high forest (386,000 ha; FAO)
 - 23% woodland
- Deforestation rate (1990-2010)
 - 2.9% p.a.
- Land ownership
 - Public 27%; private 73%



Strengths of the Togo R-PP

- Togo has done an excellent job in drawing together all the necessary threads to weave together a convincing case for how it will go about preparing for REDD+.
- The strongest parts of the submission are to be found in the technical aspects of the R-PP, such as the analysis of the causes of deforestation and degradation, the proposals about the establishment of the reference emission level and the proposed approaches to monitoring, both of emissions through the MRV process, and of the performance of the programme, through the M and E process.
- At the TAP's suggestion, Togo has reverted to the drawing board in developing a more coherent and convincing strategy (in Component 2b) that is responsive to the analysis of the drivers of deforestation presented in 2a. What was a weakness is now a strength.
- In the view of the TAP, the standard has been met for the majority of the components (7 out of 12) and largely met in the remainder.

Standards table for Togo

Components	Draft R-PP submitted for PC16 (September 2013)	Revised R-PP submitted for PC16 (November 2013)
1a	Standard largely met	Standard met
1b	Standard largely met	Standard met
1c	Standard partially met	Standard largely met
2a	Standard largely met	Standard largely met
2b	Standard not met	Standard met
2c	Standard partially met	Standard met
2d	Standard met	Standard met
3	Standard largely met	Standard met
4a	Standard partially met	Standard largely met
4b	Standard partially met	Standard largely met
5	Standard largely met	Standard largely met
6	Standard largely met	Standard met

Togo: areas needing further work

- In Component 1c, the revised proposals about increased transparency and improved governance are still not entirely convincing.
- The text in Component 2a still leaves the reader uncertain about the historical data on the forest and about the quality of previous mapping exercises
- A bit more precision is still required to tighten up the details of the MRV systems and methodologies in Component 4a
- The monitoring of co-benefits to women and through improved land tenure is still not as clearly explained as the TAP had previously requested for Component 4b
- The budget (Component 5) has been adjusted and will continue to need further refinement, as negotiations with the German government proceed, for an important grant designed to run in parallel to potential support from FCPF

Concluding remarks

This R-PP is very close to being of adequate standard throughout. None of the improvements referred to above would require more than a modest amount of work and could be very easily dealt with, being largely editorial, not fundamental

Togo should be congratulated for its efforts and the TAP wishes to record what a pleasure it has been working with the very responsive Togo team, to enable them get the proposal to its present state.